



Heritage Plates

HERITAGE PLATE AUCTION

18-25 March 2025

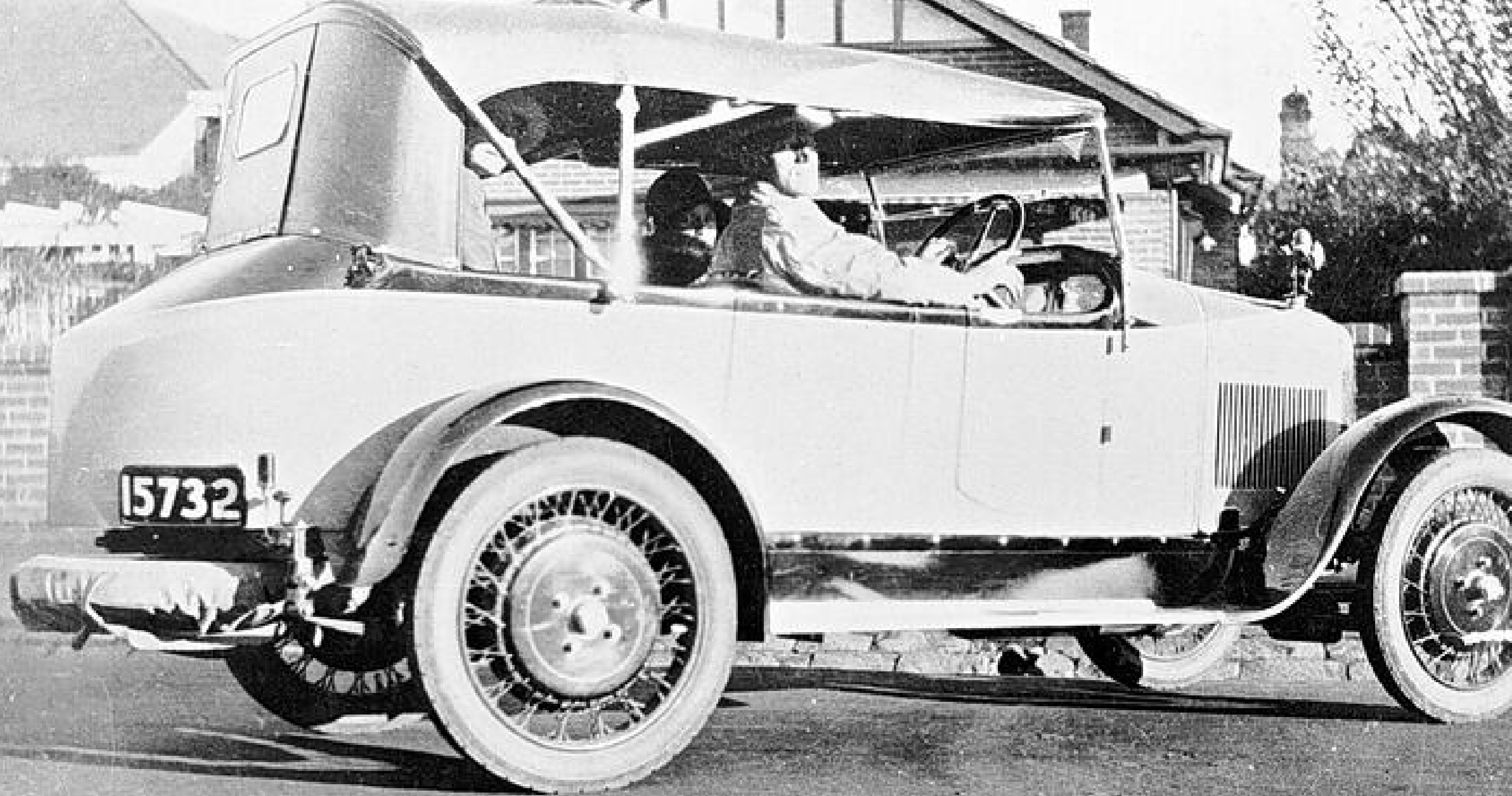


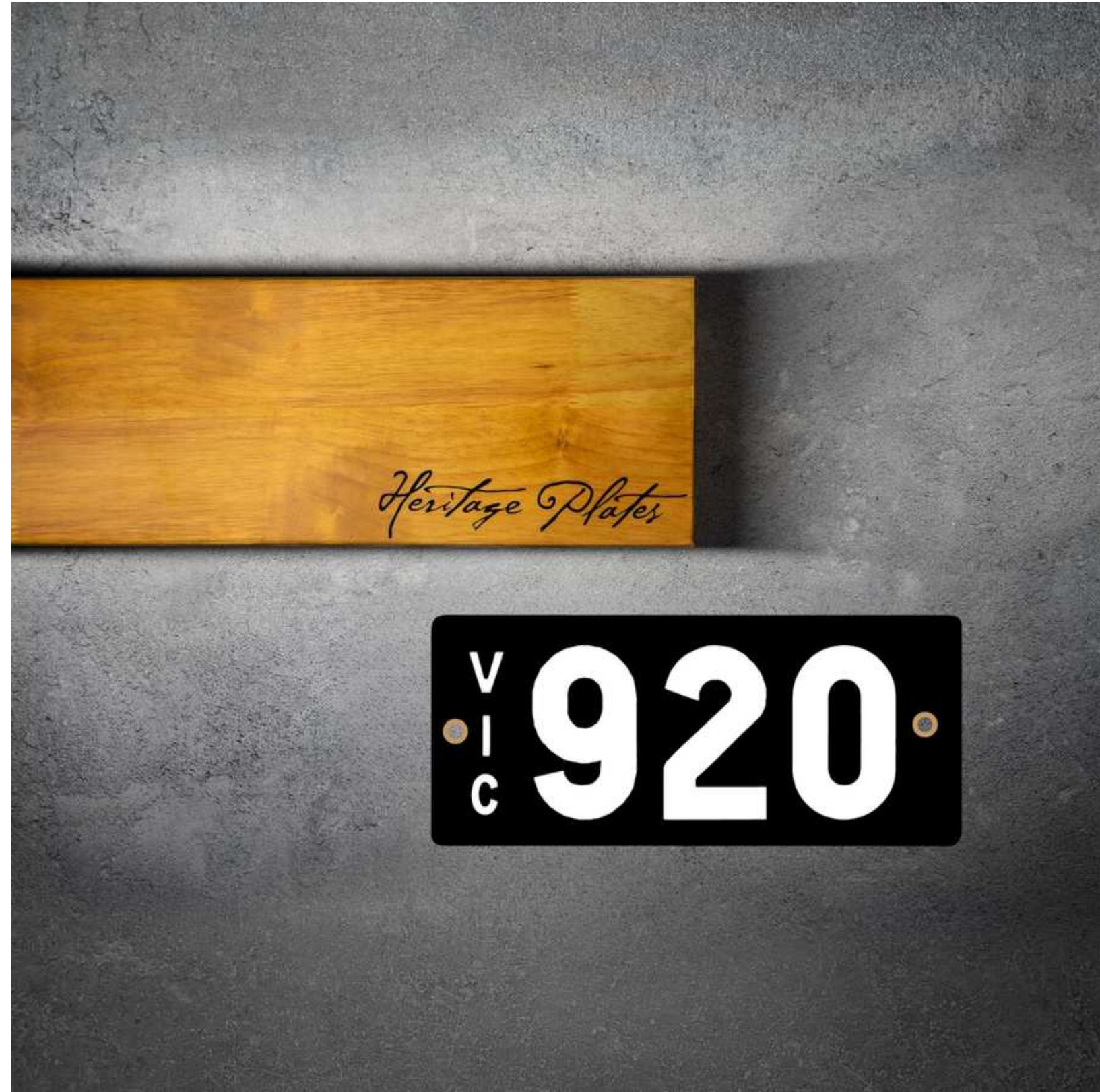
Heritage Plates

The original Heritage plates were the first official number plates released in Victoria. Each one made by hand, these iconic plates adorned the cars of VIPs and distinguished Victorians. Available between 1932 and 1939, the original Heritage plates were issued from 1 to 285,000.

Our Heritage plates are a faithful replicas of Victoria's first number plates, meticulously crafted to mid-20th century specifications. This limited edition range retains the original number series, adding to their rarity.









This sought after 3-digit Heritage plate, 920, is one of the earliest issued – a rare and prestigious part of Victorian motoring history.

SOLD: \$335,500





This 5-digit Heritage plate features two repeating rounded numbers six and three, making it truly eye-catching with its symmetrical shape.

SOLD: \$97,000

V
I
C 63-636



The striking repetition of sevens, paired with a distinctive zero, makes 70.077 a bold and unforgettable combination.

SOLD: \$140,000





The appeal of this 5-digit combination is in the rounded curves of the number two and double zeros. A highly sought after Heritage plate in the series.

SOLD: \$109,500





V
I
C

6-8880

Luck and fortune are woven into 6.880, a combination rich in meaning and symbolism.

SOLD: \$153,500





V
I
C 5-577

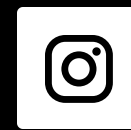
With its bold repeating
sequence, 5.577 is a striking
4-digit combination that
stands out in this auction.

SOLD: \$191,888



Heritage Plates

vplates.com.au



*Representations of plates provided are for illustration purposes only, final products may vary slightly from what is displayed. Unless noted otherwise, combinations depicted in this catalogue are correct as of 11 March 2025 and will be available for auction on Tuesday 18 March through approved auction host Trading Garage. VicRoads Custom Plates has the right to withdraw from auction any depicted plate combinations without notice. Version 1

